

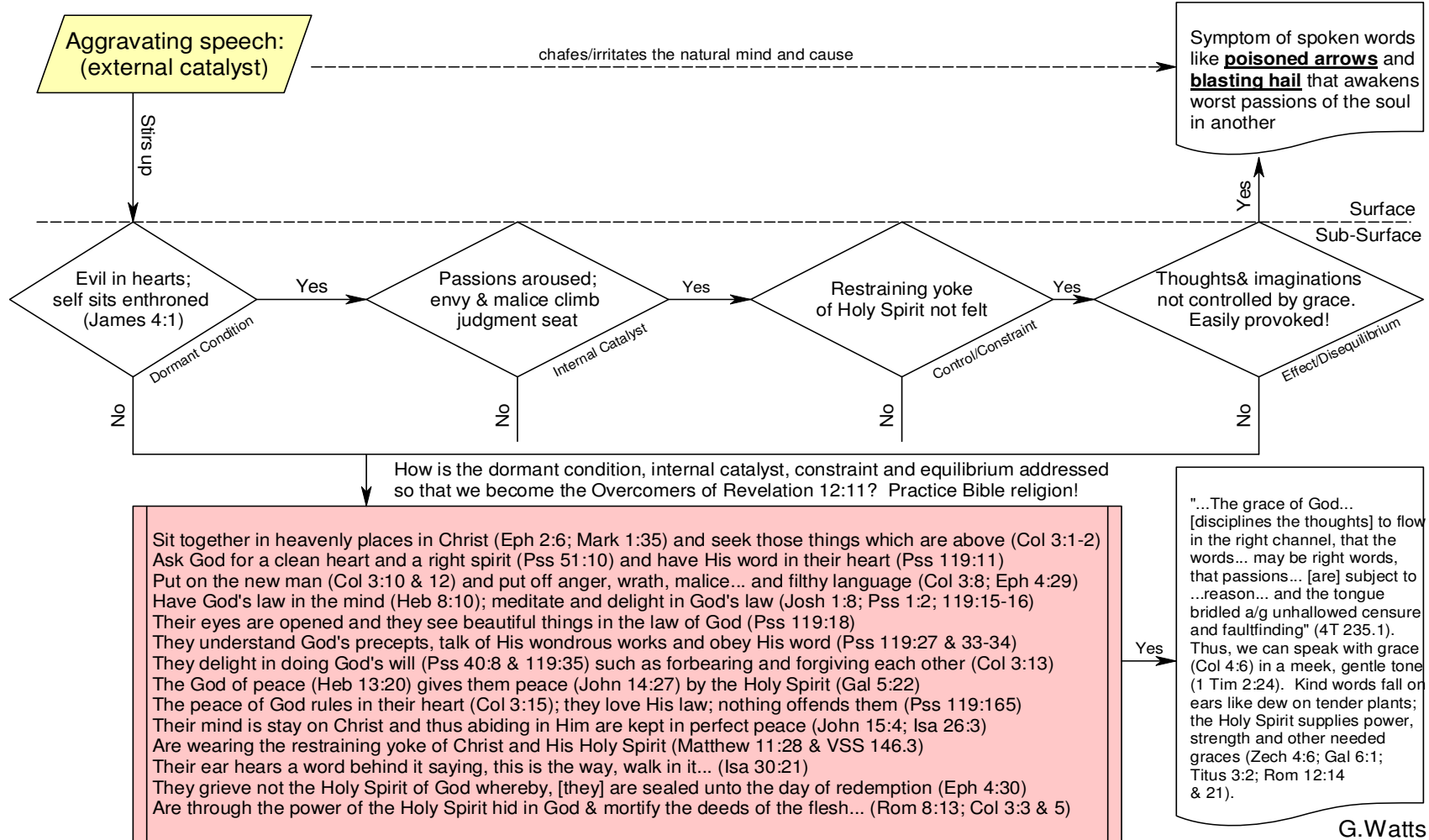
Taming the Tongue

Model of Upstream Revival and Reformation to Interrupt the Decision Sequence of Sinning with the Mouth (Psalms 17:3, NIV)

Conditioned Stimulus/Trigger
(Button Pushed)
(Cause)

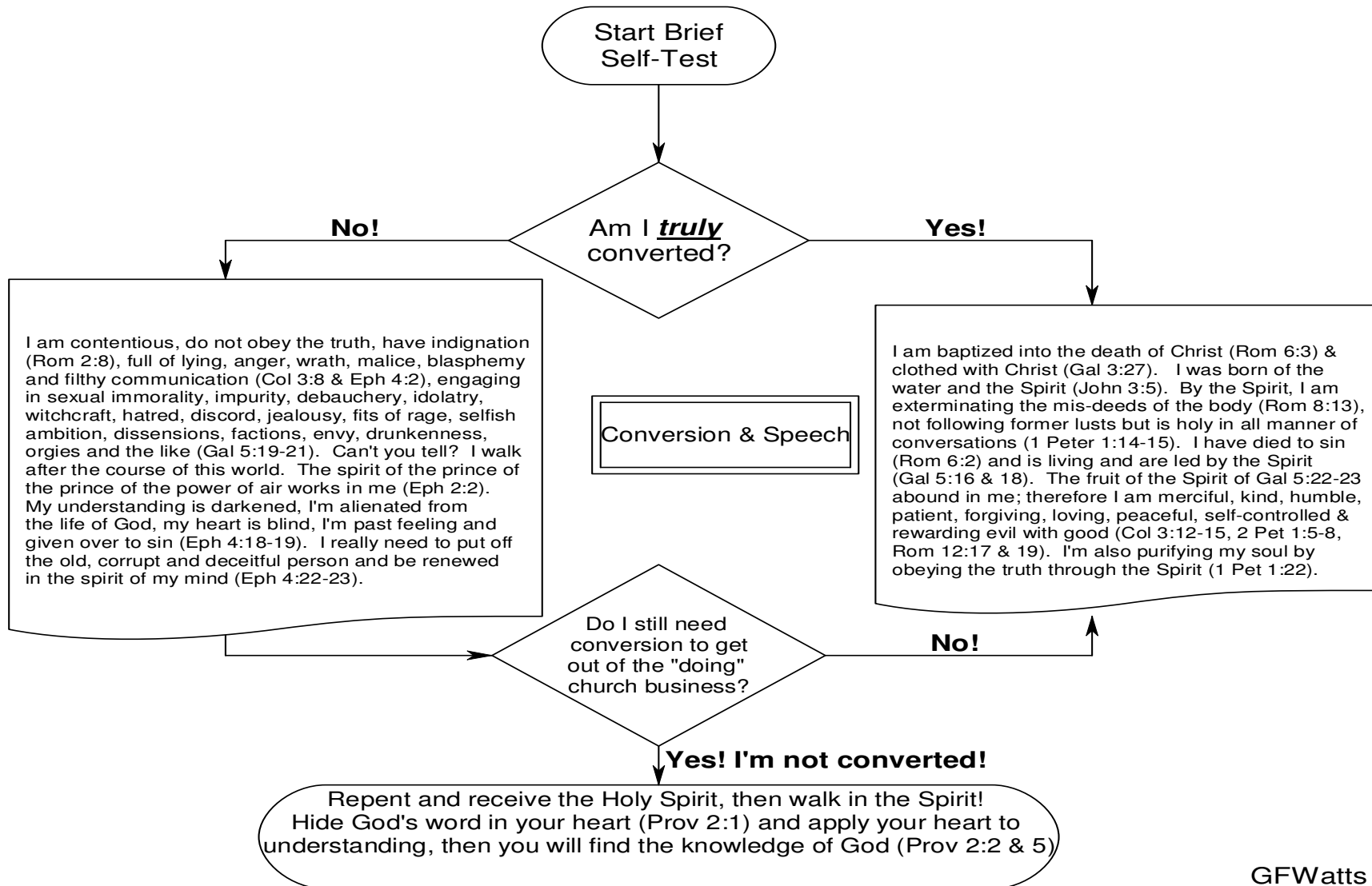
Because it is not in the way of man of Genesis 5:2 to self direct
(Jeremiah 10:23); terrestrial interventions based on lecturing and/or
punishing fail to effect reform.

Conditioned Response
(Natural Reaction)
(Effect)



G.Watts

Taming the Tongue



GFWatts